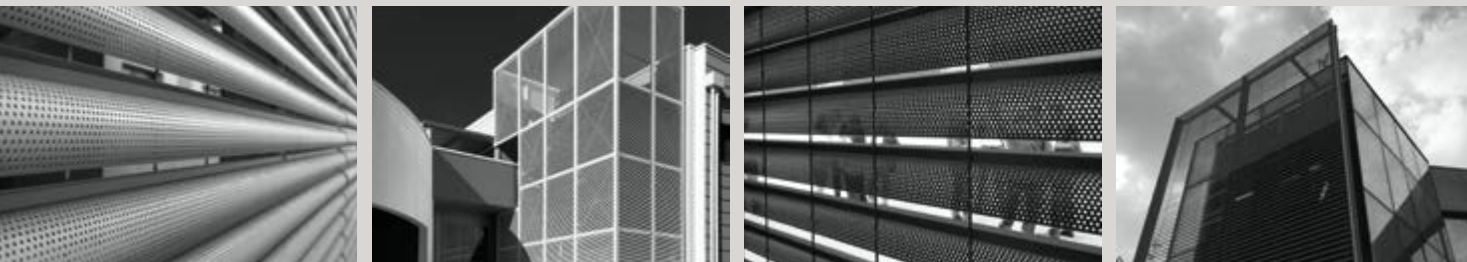


III Wall cladding



TALIA® / SCREEN / TALIALIVE



Download

With its many variants, the range of TALIA® fencing is the ideal solution to meet the aesthetic requirements of both new projects and the growing demand for the renovation of new building structures. The elegant linear profile blends harmoniously with all settings, from the most modern hi-tech solution to that in tune with nature. All this is possible thanks to the wide offer of finish available (hot-dip galvanized and painted) and the materials used. Among these, NUOVA DEFIM ORSOGRIL offers the exclusive TALIALIVE, which combines the unique style of TALIA® with the properties of COR-TEN steel, such as warm and "live" colours, no need of maintenance, an advantage that is particularly appreciated for installations at height altitude.

The TALIA® profile is available in the STANDARD and SCREEN versions to meet different shielding requirements. The panels are installed in collaboration with the technical office, using either standard products, or custom solutions for specific projects. The lack of surface finish in the TALIALIVE version speeds up delivery times and makes it possible to make on-site corrections, without compromising aesthetics.



TECHNICAL DETAILS

Dimensions

- > Mesh 46x132 mm
- > TALIA® and TALIA® SCREEN horizontal/vertical profiles
- > Vertical/horizontal round bars Ø 4 mm

Material

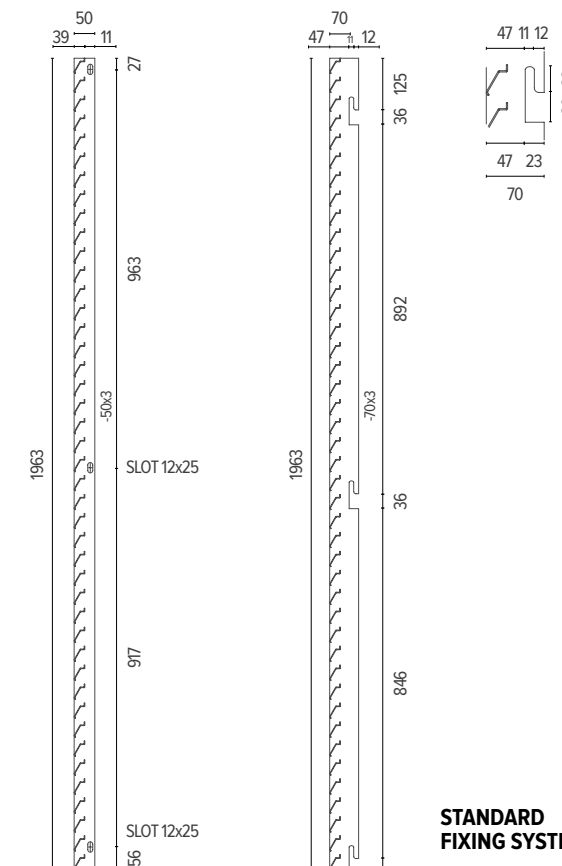
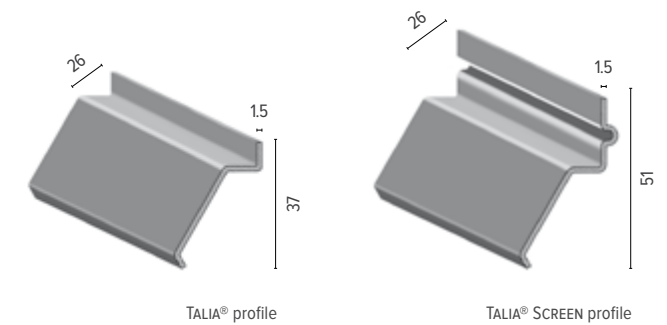
- > S235JR UNI EN 10025 steel
- > COR-TEN steel S355 JOWP

Coating

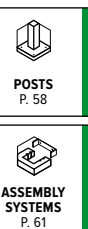
- > Hot-dip galvanizing according to UNI EN ISO 1461
- > Polyester powder coating
- > Possible oxidation aid by pickling (COR-TEN)

PRODUCT SPECIFICATIONS

Wall cladding system consisting of S235JR slatted steel or COR-TEN steel, 46x132 mesh size, welded to 4 mm diameter vertical round bars.



STANDARD
FIXING SYSTEMS



TETI

TETI is the new exclusive wall cladding system by NUOVA DEFIM ORSOGRIL made up of shaped metal profiles welded to 4 mm diameter vertical round bars. It is available with both solid and micro-perforated profile version, which enhances permeability and elegance. The unframed panel can be fixed directly to the structure. This characteristic makes the installation quick, cost-effective and versatile for original projects.

TECHNICAL DETAILS

Dimensions

- > Mesh 116x200 mm
- > Horizontal profiles
- > Vertical round bars 4 mm

Material

- > S235JR UNI EN 10025 steel (solid profile)
- > S235JR UNI EN 10025 Sendzimir steel (micro-perforated profile)

Coating

- > Hot-dip galvanizing according to UNI EN ISO 1461
- > Polyester powder coating

Fixing system

- > From front with self-tapping screws

PRODUCT SPECIFICATIONS

TETI wall cladding system consists of modular monolithic panels, mesh size 116x200 mm, special section horizontal profiles (centres distance 116 mm), 4 mm diameter round bar vertical connections (centres distance 200 mm).

SOLID PROFILE

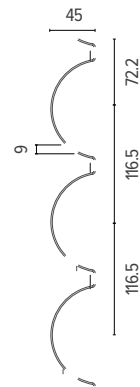
Material: S235JR UNI EN 10025 steel

MICRO-PERFORATED PROFILE

Material: S235JR UNI EN 10025 Sendzimir steel.

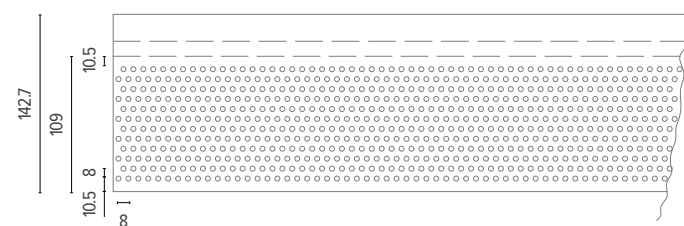
Finish: polyester powder coating on hot-dip galvanized material according to UNI EN ISO 1461, or on Sendzimir steel.

Front fixing system with self-tapping screws. The use of a fixing element per profile is recommended. Panel sizes 5500x1972 mm.



PANEL				MESH		CROSS WIRE
H	L	Weight	H	L	Ø	
mm	mm	kg/ea	mm	mm	mm	
1972	5500	167.7	15.5	116	200	5

MICRO-PERFORATED PROFILE



VERTICAL SEMI-FINISHED GRATING

As a complement to the assortment of fencing products, NUOVA DEFIM ORSOGRIL offers a large number of semi-finished products in standard sizes (see table), with self-colour or hot-dip galvanized finish, for metal fabricators, blacksmiths and steel stockholders that wish to customise their fencing, steelworks, wall cladding project.

TECHNICAL DETAILS

Material

- > S235JR UNI EN 10025 steel
- > COR-TEN steel

Coating

- > Hot-dip galvanizing according to UNI EN ISO 1461
- > Possible pickling (COR-TEN)



TYPO	PANEL			MESH		BEARING BAR		CROSS WIRE	PACKAGING
	H	L	Weight	A	B	H	S	Ø	no. pieces
	mm	mm	kg/ea	mm	mm	mm	mm	mm	-
DIONE	6000	1136	77.8	42	44	25	2	4	10
DANAE	5900	1136	64.9	42	132	25	2	4	10
PLEIONE	5900	1552	71.2	62	66	25	2	4.5	10
	5900	1862	85.0	62	66	25	2	4.5	10
STEROPE 2	5900	1552	63.2	62	132	25	2	4.5	10
	5900	1862	75.5	62	132	25	2	4.5	10
STEROPE 3	5900	1553	92.3	62	132	25	3	4.5	10
	5900	1863	110.2	62	132	25	3	4.5	10
BRITOSTEROPE	5900	1864	180.9	62	132	30	4	6	10
	5400	1596	117.9	46	132			4	5
TALIA	5400	1963	145.0	46	132			4	5
	6100	1596	130.8	46	132	sp. 1.5		4	5
	6100	1963	160.8	46	132			4	5
TALIA SCREEN	5400	1610	154.7	46	132			4	5
	5400	1975	190.0	46	132	sp. 1.5		4	5
	6100	1610	171.6	46	132			4	5
6100	1975	210.7	46	132			4	5	
TETI	5500	1972	163.5	116	200	sp. 1.5		4.5	5
TETI MICRO-PERFORATED 1 SENDZIMIR	5500	1972	152.6	116	200	sp. 1.5		4.5	5
MEROPE	5990	1862	54.7	124	62	25	2	4.5	10
	6100	1000	77.1			25	6	12	5
ANTICLEA	6100	1200	86.8			25	6	12	5
	6100	1500	101.5	ANTICLEA		25	6	12	5
	6100	1800	130.2			25	6	12	5
	6100	2000	140.0			25	6	12	5

