

# Nuova Defim Orsogrill makes louvered fencing out of Corten steel





**T**his summer, Italian company Nuova Defim Orsogril has expanded its Talia louvered fencing range with a new version made out of Corten steel. The new type of fencing is called Talialive, because Corten steel changes colour a few times during its lifetime, and therefore seems to be 'alive'.

Rembrandt Happel



3 Minutes



## Talia

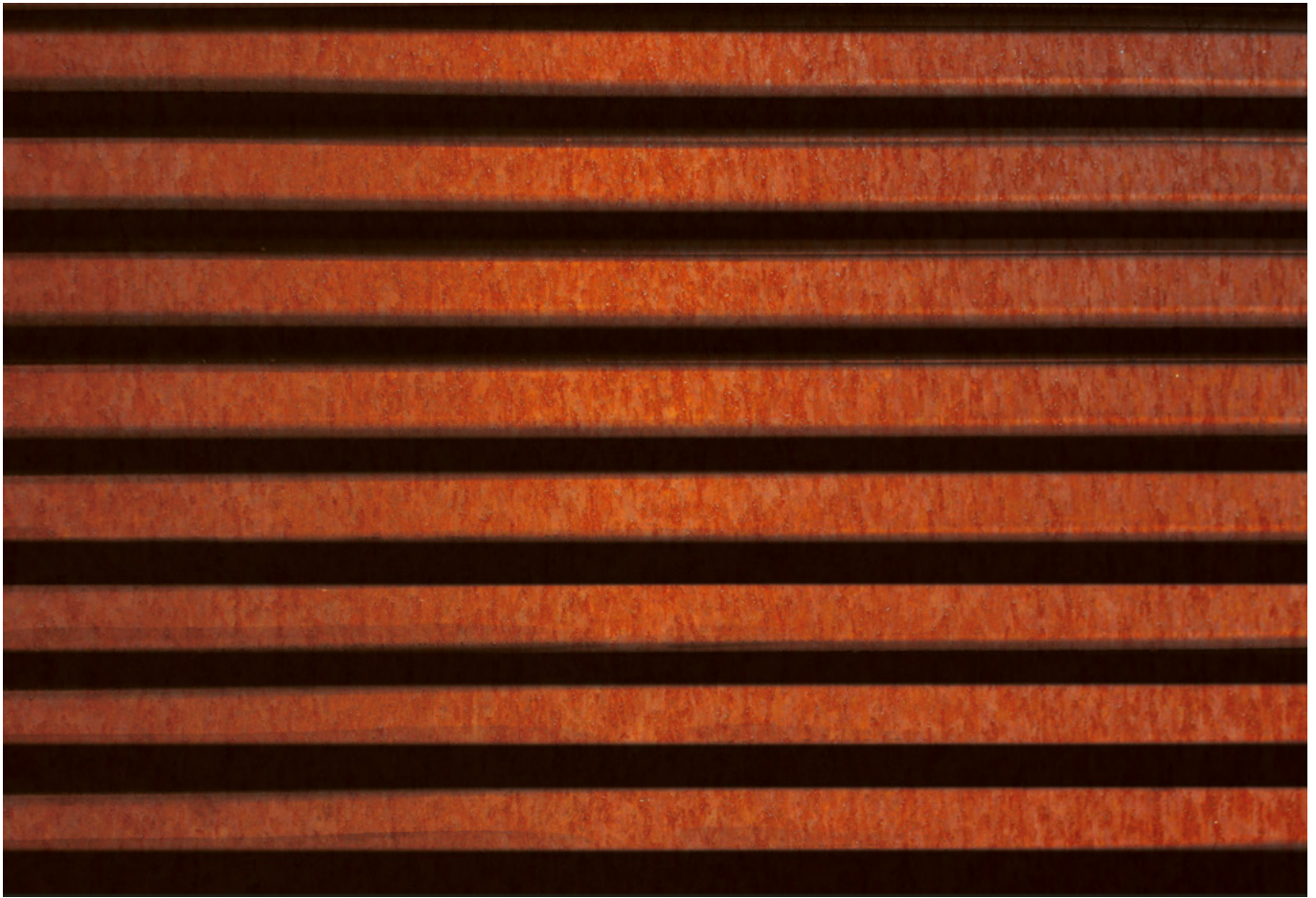
The louvered fencing in itself is not new. The Talia panels have been part of the Orsogril product range for years. They were once conceived to serve as a privacy version of grating fencing, which is popular in Italy - and nowadays it is gaining popularity in England too. This grating is made of steel strips, like the stairs in a fire escape, that are then placed upright. Talia panels also consist of steel-strip frames, but these are filled with obliquely welded in louvers in one direction and wire in the other direction. *"The first panels had horizontal louvers and they were closed for 80 percent,"* says Alberto Santulli, one of the export managers of the group. *"Later, we added panels with vertical louvers and panels that are closed off 100%. And now panels that are made out of Corten steel."*

*Grigliato or grating fencing*



*Louvered fencing type Talia*



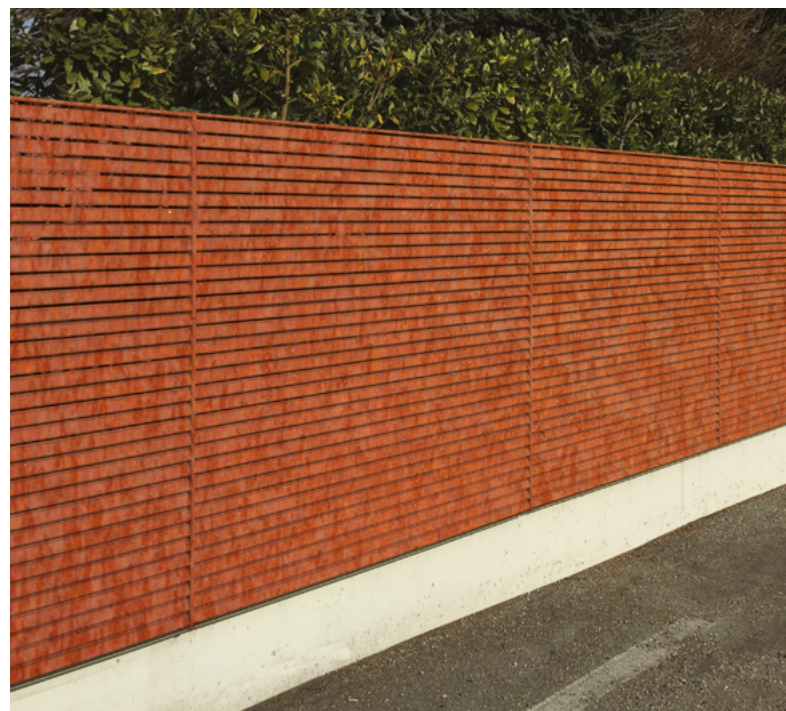


### Talialive

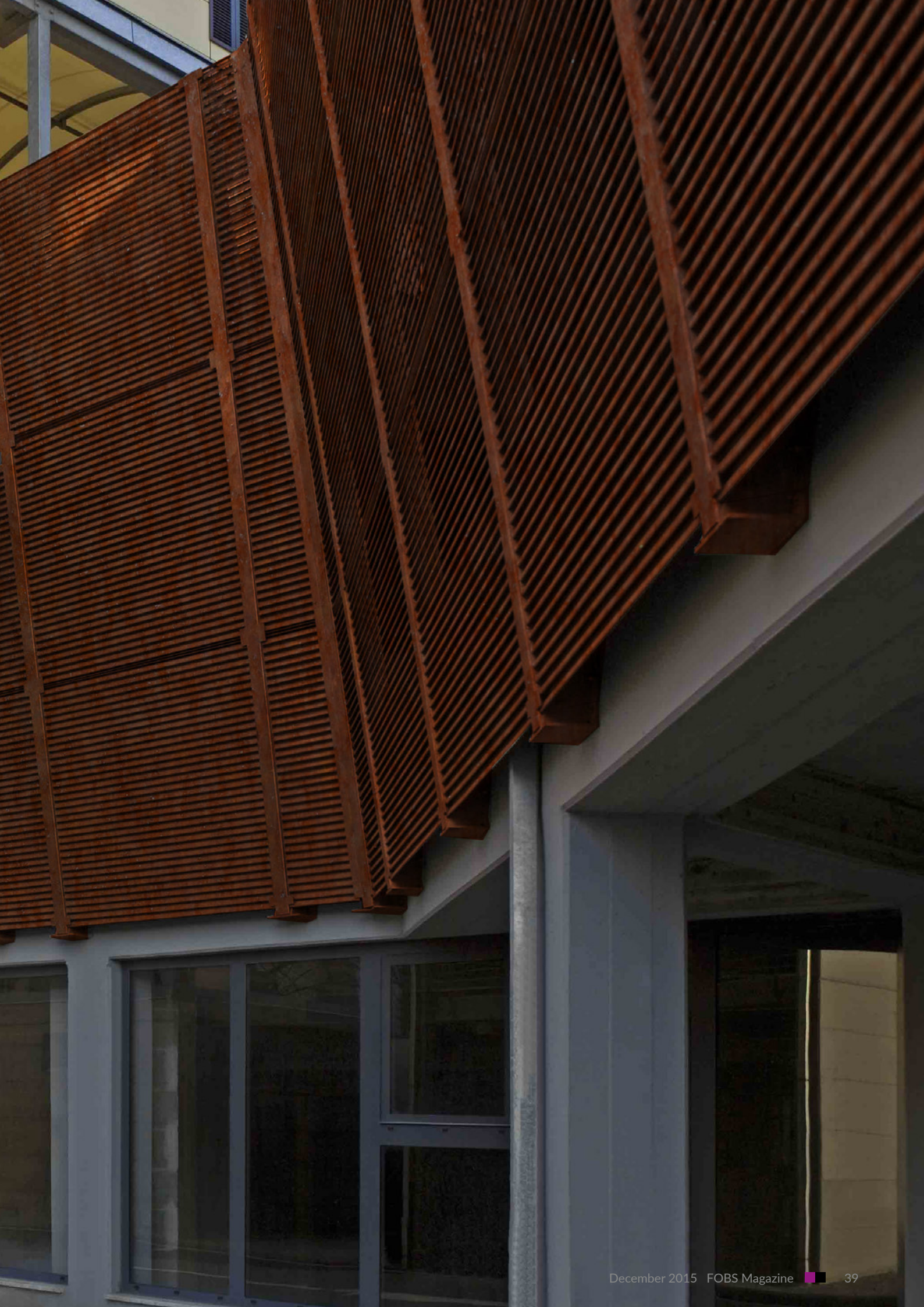
The name is a combination of Talia and alive, because the fencing literally comes to life. Santulli: *“The appealing quality of Corten steel is that it changes colour. Over the course of time, it changes from russet to sand brown and finally to dark brown. For that reason, architects love it.”*

### Corten steel

Corten steel or COR-TEN-steel is a type of steel to which copper, phosphor, silicon, nickel and chrome were added. The tensile strength is comparable to that of other alloyed steel types like stainless steel. Just like in untreated aluminium, corrosion forms an extremely dense oxide skin that blocks oxygen from the deeper material, thus delaying the corrosion process significantly. The material has those qualities to thank for its name: COR stands for corrosion resistant and TEN for the high tensile strength.







## Advantages

*“Those qualities come with a few extra advantages,” says Santulli. “It is relatively cheap because there is no need for zinc and powder coating. Even though Corten steel is more expensive than regular steel, in the end it is actually cheaper. Also, not having to galvanize and coat the material obviously reduces delivery time, whilst making the product more environmentally friendly, which is a hot topic nowadays. Moreover, Talialive is completely maintenance-free for life.”*

## Façade

Just like the Talia panels that are galvanized and coated, the new Talialive is not only popular for fencing, but also as outer wall cladding. *“The louvers protect the façade of a building against the worst effects of the weather, without completely closing the façade off,”* says Santulli. *“We have already used these Corten steel panels to cover some well-known buildings, such as the Brazilian Pavilion at the recent Milan Expo.”*

## Specifications

Like the panels in the existing range, the Talialive panels are also available both in horizontal and vertical variants, either closed for 80 percent or 100 percent and in varying measurements. In January, the Italians will display the new Talialive fencing at the Perimeter Protection in Nuremberg. ■

*Alberto Santulli*

