

UTILIOR® press-locked gratings versatile manufacturing process offers an extremely wide mesh opening range to choose from, in order to combine attractive design with loading requirements. With the support of NUOVA DEFIM's in-house technical office, that is one of its kind in the industry, it is also provided framed and shaped panels service.



## TECHNICAL DETAILS

### Material

- > S235JR UNI EN 10025 Steel
- > Steel - stainless steel - aluminium - COR-TEN

### Coating

- > Hot-dip galvanizing according to UNI EN ISO 1461

### Painting

- > RAL colours

### Accessories

- > Fixing clips > see page 67

## APPLICATIONS

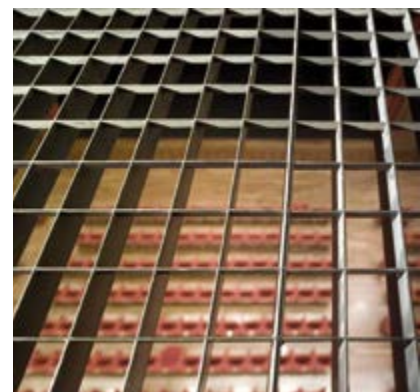
- > Drain covers
- > Open steel floors
- > Walkways
- > Stair treads
- > Light gratings
- > Mezzanines

## PRODUCT SPECIFICATIONS

ORSOGRIL UTILIOR® press-locked grating - GP (pressed grating) Cut-to size framed panels (bearing bar - mesh). Mesh mm: ... Bearing flat bar mm: ... Flat cross bar mm: ... Edges framing flat bar... Weight kg/m<sup>2</sup>: ... Material: S235JR UNI EN 10025 Steel. Finish: hot-dip galvanizing according to UNI EN ISO 1461. AGLAIA fixing clip for ... mm mesh - bottom or top fixing



BEARING BAR		CROSS BAR DIRECTION		Mesh AxB	11x66	15x66	17x66	22x22	22x66	25x66	33x33	33x66	44x11	66x11	66x22	66x33
H	S	H	S		kg/m <sup>2</sup>	kg/m <sup>2</sup>	kg/m <sup>2</sup>	kg/m <sup>2</sup>	kg/m <sup>2</sup>	kg/m <sup>2</sup>	kg/m <sup>2</sup>	kg/m <sup>2</sup>	kg/m <sup>2</sup>	kg/m <sup>2</sup>	kg/m <sup>2</sup>	kg/m <sup>2</sup>
mm	mm	mm	mm													
20	2				34.1	26.2	23.6	24.3	19.3	17.6	16.8	14.3	24.5	21.9	14.4	11.9
25	2				42	32.1	28.8	28.5	23.5	21.4	19.8	17.3	26.9	23.6	16.1	13.6
30	2				49.9	38	34.1	32.6	27.6	25.2	22.7	20.2	29.3	25.3	17.8	15.3
35	2				57.7	43.9	39.3	36.8	31.8	28.9	25.7	23.2	31.7	27	19.5	17.1
40	2				65.6	49.8	44.5	41	36	32.7	28.6	26.1	34	28.8	21.3	18.8
45	2	10	2		73.5	55.7	49.8	45.2	40.2	36.5	31.6	29.1	36.4	30.5	23	20.5
50	2				81.3	61.6	55	49.4	44.4	40.2	34.5	32	38.8	32.2	24.7	22.2
25	3				59.6	45	40.2	37.3	32.3	29.2	25.7	23.2	31.4	26.6	19.1	16.6
30	3				71	53.5	47.7	43.2	38.2	34.6	29.8	27.3	34.7	28.9	21.4	18.9
35	3				82.4	62	55.2	49.1	44.1	39.9	33.9	31.4	38	31.2	23.7	21.2
40	3				93.8	70.5	62.7	55.1	50.1	45.2	38	35.5	41.2	33.5	26	23.5
45	3				105.1	78.9	70.2	61	56	50.6	42.1	39.6	44.5	35.8	28.3	25.8
50	3				116.5	87.4	77.7	66.9	61.9	55.9	46.3	43.8	47.8	38.1	30.6	28.1
60	3				139.8	104.9	93.2	80.3	74.3	67	55.5	52.5	57.3	45.6	36.7	33.7
70	3	12	2		162.5	121.8	108.2	92.2	86.2	77.7	63.7	60.7	63.8	50.2	41.3	38.3
80	3				185.3	138.7	123.2	104	98	88.3	72	69	70.4	54.8	45.9	42.9
90	3				208	155.7	138.3	115.9	109.9	99	80.2	77.2	76.9	59.5	50.5	47.5
100	3				230.8	172.6	153.3	127.8	121.8	109.7	88.4	85.4	83.4	64.1	55.1	52.1
30	4				96.6	73.4	65.6	64.2	53	48.2	44.1	38.5	59.6	51.8	35.1	29.6
40	4				126.8	95.9	85.6	79.9	68.8	62.4	55	49.5	68.3	58	41.3	35.7
50	4				157.1	118.4	105.5	95.7	84.6	76.5	66	60.4	77	64.1	47.4	41.8
60	4				187.3	140.9	125.4	111.5	100.3	90.7	76.9	71.3	85.7	70.2	53.5	47.9
70	4				217.5	163.4	145.4	127.2	116.1	104.8	87.8	82.3	94.3	76.3	59.6	54
80	4	15	3		247.7	185.9	165.3	143	131.8	119	98.8	93.2	103	82.4	65.7	60.1
90	4				277.9	208.4	185.3	158.7	147.6	133.1	109.7	104.1	111.7	88.5	71.8	66.3
100	4				308.2	230.9	205.2	174.5	163.4	147.3	120.7	115.1	120.4	94.7	78	72.4
110	4				338.4	253.4	225.1	190.3	179.1	161.4	131.6	126	129.1	100.8	84.1	78.5
120	4				368.6	276	245.1	206	194.9	175.6	142.5	137	137.8	106.9	90.2	84.6
40	5				157.7	119.3	106.5	100.5	85.8	77.8	69.1	61.8	87.3	74.5	52.5	45.1
50	5				195.2	147.2	131.3	120	105.3	95.3	82.7	75.3	98.1	82.1	60.1	52.7
60	5				232.7	175.2	156	139.5	124.8	112.9	96.3	88.9	108.9	89.7	67.7	60.3
70	5				270.1	203.1	180.7	159.1	144.4	130.4	109.8	102.5	119.7	97.3	75.3	67.9
80	5	15	4		307.6	231	205.4	178.6	163.9	148	123.4	116	130.4	104.9	82.8	75.5
90	5				345.1	258.9	230.2	198.2	183.5	165.5	136.9	129.6	141.2	112.5	90.4	83.1
100	5				382.5	286.8	254.9	217.7	203	183.1	150.5	143.2	152	120.1	98	90.7
110	5				420	314.7	279.6	237.2	222.5	200.6	164.1	156.7	162.8	127.7	105.6	98.3
120	5				457.5	342.6	304.3	256.8	242.1	218.2	177.6	170.3	173.5	135.2	113.2	105.8



PRESSED GRATING - WEIGHT OF GALVANIZED FRAMED PANELS.

Weights kg/m<sup>2</sup> are theoretical and subject to dimensional tolerances of raw materials (page 16 of UNI 11002, Point 5.3, Prospect 1)