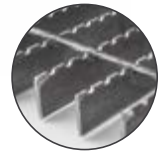
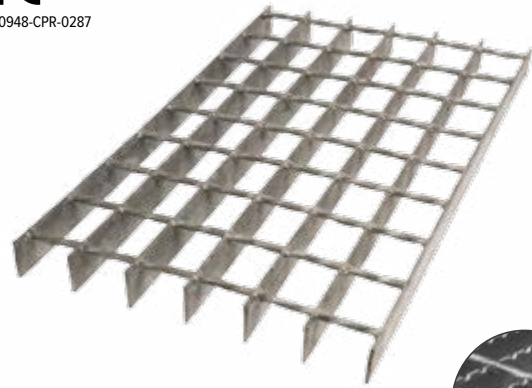


POTISSIMUM® INDUSTRY

Thanks to its special manufacturing process, POTISSIMUM® INDUSTRIAL electro-welded steel grating system offers exceptional sturdiness combined with a great versatility. With its wide range of ready from stock mesh sizes, it can respond to every need and situation, mainly for industrial applications.

Tailored, framed and shaped grating panels are realized to complete from the simplest, to the more complex project with the support of our unique in-house technical office, assisting the customers at the design stage to provide the most economic and appropriate solutions. Both the standard semi-finished grating mats called GEA, sized 6100x1000 mm and the cut-to-size panels are supplied CE marked and with the relevant Italian Protected Designation of Origin (PDO).



Detail for serrated version (anti-skid Class R10 no. 5648/14)

TECHNICAL DETAILS

Material

> S235JR UNI EN 10025 Steel

Coating

> Hot-dip galvanizing according to UNI EN ISO 1461

Painting

> RAL colours

Accessories

> Fixing clips > see page. 67

APPLICATIONS

- > Walkways
- > Stair treads
- > Drain covers
- > Industrial floors
- > Mezzanines

PRODUCT SPECIFICATIONS

ORSOGRIL POTISSIMUM® industrial electro-welded grating - GES Cut-to-size framed panels (bearing bar - mesh)

Mesh mm: 30/34 x ...

Bearing flat bar mm: ...

Twisted square cross bar mm: ...

Edges framing flat bar, ... mm with continuous groove, forge-welded to the grating (on regular squared panels)

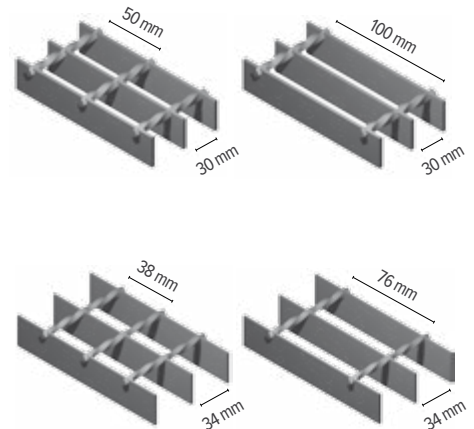
Weight kg/m²: ...

Material: S235JR UNI EN 10025 Steel

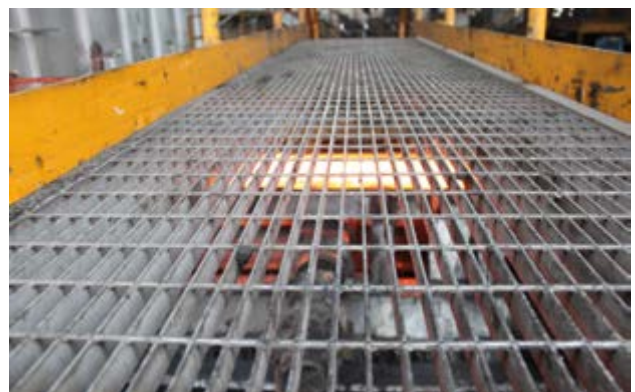
Finish: hot-dip galvanizing, according to UNI EN ISO 1461

AGLAIA fixing clip for ... mm mesh - bottom or top fixing

CE certified (Ref. Factory Manufacturing Control Certificate 0948-CPR-0287)



BEARING BAR		CROSS BAR DIRECTION	N. bearing bars	34°	34°	30°	30°
H	S	L		Mesh	35x50	30x100	34x38
mm	mm	mm	Weight	kg/m ²	kg/m ²	kg/m ²	kg/m ²
25	2	998	-	-	-	14.0	12.4
30	2	998	-	-	-	16.2	14.6
40	2	998	-	-	-	20.7	-
25	3	999	21*	19.8*	19.6	18	-
30	3	999	24.9*	23.7*	23.1*	21.4	-
40	3	999	32.6	31.4	29.9*	28.3	-
50	3	999	-	-	-	36.7	35.1
40	4	1000	43	41.8	39.1	37.4	-
25	5	1000	34.4*	32.4*	-	-	-
30	5	1000	40.9*	38.9*	-	-	-
32	5	1000	43.5*	41.5*	-	-	-



GEA MAT SIZE 6100x1000 mm, UNFRAMED - SELF COLOURED

*cross bars twisted

*offered also with serrated bearing bar

Weights kg/m² are theoretical and subject to dimensional tolerances of raw materials (page 16 of UNI 11002, Point 5.3, Prospect 1)