

TALIALIVE

TALIALIVE, LIFE AND ENVIRONMENT

Unique fencing system encompassing all the appeal of COR-TEN steel. Thanks to the ageing and oxidising processes, the steel characterising this system is a "live" material, in that its hues and nuances may change over time, thereby enhancing the architectural design with a play of light and shadow created by the cladding lamellas.

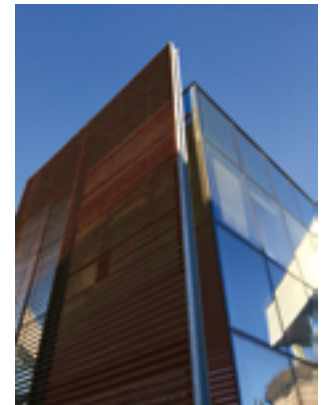
An elegant, pure, rigorous design for timeless architecture. TALIALIVE has been developed using a material that reinterprets traditional iron-working artisanship in a modern way. An original choice of high aesthetic value for design solutions.



TALIALIVE, MODERN AND EFFICIENT

With its low content of alloying elements and high mechanical strength, COR-TEN steel has become increasingly popular in modern architecture that favours not only aesthetic but also maintenance-free and long life products. TALIALIVE encompasses all the features sought after by the most advanced building technology. TALIALIVE guarantees:

- > no maintenance costs
- > corrosion resistance five to eight times higher than carbon steel
- > high mechanical strength



TALIA, MORE SOLUTIONS FOR YOUR PROJECT

From the development of new architectural solutions, TALIALIVE is an innovative welded "louvered" grating from the TALIA® family, designed for numerous applications: visual and environmental protection, shielding, façade cladding, curtain walling and complete fencing. The TALIA® modular system, which is obtained by welding shaped profiles and transversal wires together, features numerous strengths, namely versatility, attractive design, ease of use and installation.

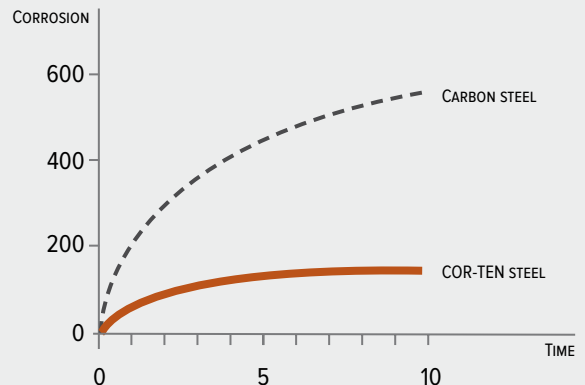
The longer special louvered profile in the TALIA® SCREEN version increases the shielding characteristics and provides better protection against the wind and rain.



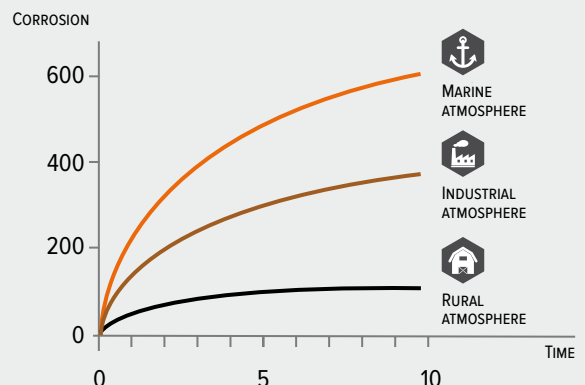
POSTS
P. 58



ASSEMBLY
SYSTEMS
P. 61



CARBON STEELS VERSUS COR-TEN



COR-TEN STEEL IN VARIOUS ATMOSPHERES

TALIALIVE

An elegant, pure, rigorous design for timeless architecture. TALIALIVE has been developed using a material that reinterprets traditional iron-working artisanship in a modern way. An original choice of high aesthetic value for design solutions.

TALIALIVE preserves the privacy features typical of the fencing in this range. Maintenance costs are eliminated, thanks to a "live" material that, by taking on new hues and nuances with the passing of time, contributes to enhancing the overall design.

Both in the standard and the Screen version, TALIALIVE is the only louvered grating fence certified for wind protection, thanks to the post and panel integrated (welded) system, which also ensures quick and easy installation.

TECHNICAL DETAILS

Dimensions

- > Mesh 46x132 mm
- > TALIALIVE® and TALIALIVE® SCREEN horizontal/vertical profiles
- > Vertical/horizontal round bars Ø 4 mm

Material

- > COR-TEN S355JOWP steel

Coating

- > Possible pickling

Fixing system

- > TTQST M10x30 stainless steel or Nerinox security bolts

Post

- > Flat 60x7 or bespoke on demand

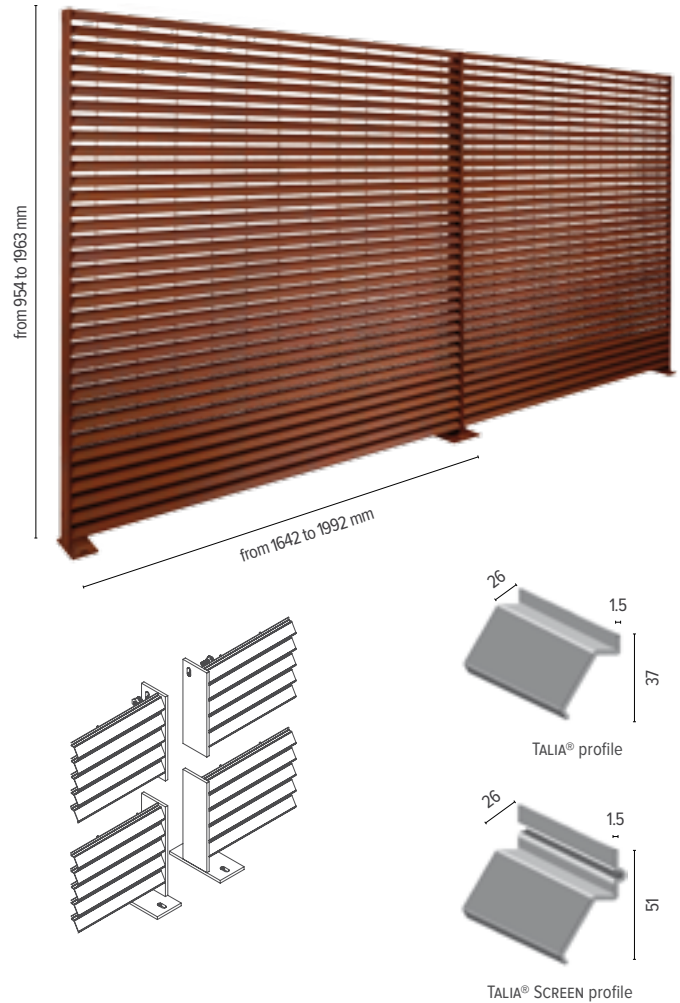
APPLICATIONS

- > Luxury housing
- > Technical areas
- > Public buildings

PRODUCT SPECIFICATIONS

TALIALIVE and TALIALIVE SCREEN fencing is made up of modular monolithic panels, 46x132 mm mesh, special section horizontal profiles (centres distance 46 mm), Ø 4 mm round vertical joining bars (centres distance 132 mm) and 60x7 mm flat posts welded at both sides ends, making up one single unit ready for installation, with appropriate holes for fixing adjacent panels.

Centres distance: 1650-2000 mm
Material: COR-TEN steel
Coating: possible pickling



TALIALIVE

PANEL				POST		Post to be set in concrete		Post with base plate	
H	L	Weight		Section	Fixing points	L	Weight galv.	L	Weight galv.
mm	mm	kg/ea	kg/m ²	mm	n°	mm	kg/ea	mm	kg/ea
954	1650	32.4	20.6	60x7	3	1200	3.9	1001	3.9
954	2000	37.3	19.6	60x7	3	1200	3.9	1001	3.9
1596	1650	53.1	20.2	60x7	3	1850	6.1	1643	6.0
1596	2000	61.6	19.3	60x7	3	1850	6.1	1643	6.0
1963	1650	65.4	20.2	60x7	3	2300	7.6	2010	7.2
1963	2000	75.7	19.3	60x7	3	2300	7.6	2010	7.2

TALIALIVE SCREEN

PANEL				POST		Post to be set in concrete		Post with base plate	
H	L	Weight		Section	Fixing points	L	Weight galv.	L	Weight galv.
mm	mm	kg/ea	kg/m ²	mm	n°	mm	kg/ea	mm	kg/ea
967	1650	41.0	25.7	60x7	3	1200	3.9	1014	3.9
967	2000	47.7	24.7	60x7	3	1200	3.9	1014	3.9
1608	1650	67.1	25.3	60x7	3	1850	6.1	1655	6.0
1608	2000	78.4	24.4	60x7	3	1850	6.1	1655	6.0
1975	1650	82.4	25.3	60x7	3	2300	7.6	2022	7.2
1975	2000	96.7	24.5	60x7	3	2300	7.6	2022	7.2

